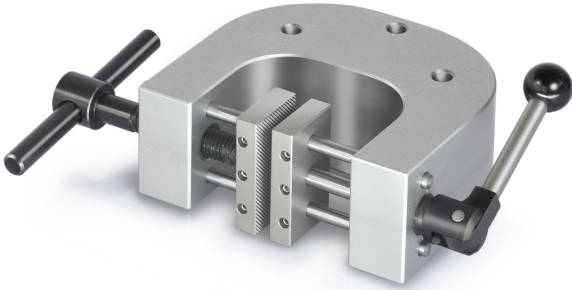


KERN AD 9052

KERN

Screw-in clamp 5 kN, scope of delivery: 2 pieces



Category

Brand	Sauter
Product category	Clamp
Product group	Screw tension clamp

Construction

Dimensions completely mounted (W×D×H)	338×145×70 mm
Material	aluminium
Mounting - force dissipation	Threaded hole M6 External thread M12
Tensile/compressive force [Max]	5 kN
Clamping width	52 mm

Environmental conditions

Storage temperature [Min]	-10 °C
Storage temperature [Max]	40 °C

Packing & Shipping

Readability force [d] (N)	14 d
Dimensions packaging (W×D×H)	338×145×70 mm
Net weight	2,6 kg
Shipping method	Parcel service
Net weight approx.	2,6 kg
Gross weight approx.	2,6 kg
Shipping weight	2,6 kg

Pictograms